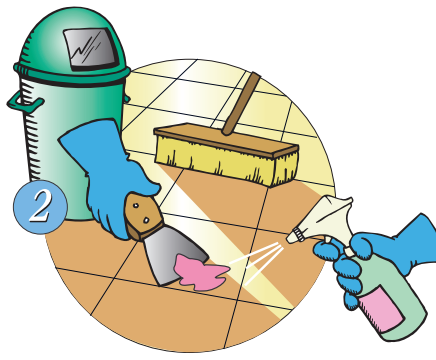


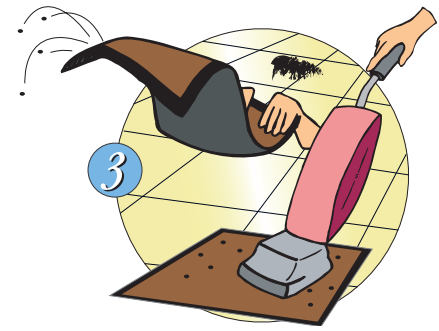
High Speed Floor Care



1 Dust mop using a microfiber dust mop 1 or more times per day to remove surface soil.



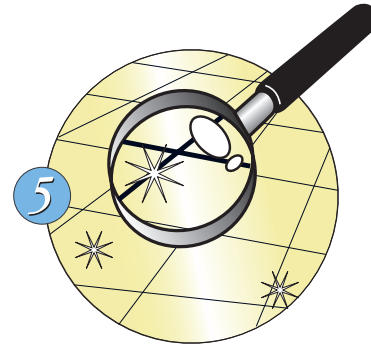
2 Use ECOSPHERE Bio Gel Graffiti Remover to remove gum and other attached soil deposits.



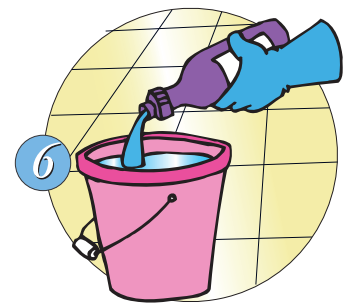
3 Vacuum or shake out walk off mats. Replace mats as needed. The more dirt you stop at the entrances, the longer the floor finish will last and maintain a higher appearance level.



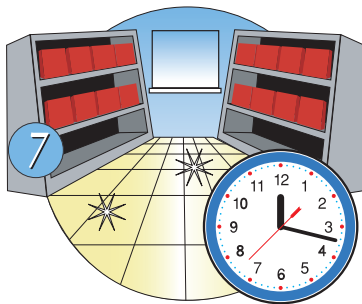
4 Use CAM PRO Premier Floor Cleaner or CAM PRO TAC-20 Neutral Disinfectant Cleaner following label directions.



5 Make sure floor is clean. If not, repeat above procedure.



6 Use EcoSphere Gloss Restorer following label directions.



7 Allow floor to dry.



8 Always make sure there is a sufficient finish base on the floor before buffing with a high-speed machine to avoid permanent tile damage.



9 Once floor is dry, walk in a straight line at normal pace with a Cam Pro high-speed floor machine.



10 Do not stop or allow machine to run in one spot.



11 When finished, dust mop the entire area using a microfiber dust mop.



12 Clean and store all equipment for future use.

daily procedures